

STATE OF  
THE ART



CONTACT US



**Urban Abode Limited**

2nd Floor, Shippers' Plaza Plot 438,  
Michael Okpara Way Zone 5, Wuse, Abuja



Phone: +234 92 910 967  
Instagram: @urbanabodeng1  
Website: www.urbanabodeng.com

*The Hillview Villas*

Elegant strand of the future

BY URBAN ABODE



# *The Hillview Villas*

Elegant strand of the future

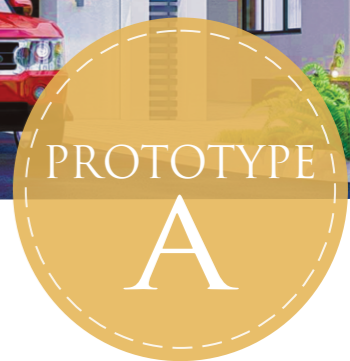


STATE OF  
THE ART

## The HillView Villas

by Urban Abode is a 12- house court of 2 Prototype designs, with a Club House located in the developed district of Gwarimpa.

The modernly developed Villa is one of rare quality built to suit the highest of taste. It is the home's meticulous design and incorporation of exclusive materials that truly makes it high-end.





# LANDSCAPE

Offering the best of both worlds, The FCT Abuja, well recognized for its political and structural affluence holds the developed Gwarimpa district, known as the largest single housing estate in Nigeria.

Sitting proudly in the heart of Gwarimpa, with easy access to the commercial districts of Abuja's tourist attraction.

A big general market, Plazas and banks within reach.

## The Most Planned City in Nigeria

In all of Africa, Abuja is the only purpose-built city.

The territory was intentionally carved out to become the capital of Nigeria in 1991.

As a result, the city has the most extensive road network in the country, making every area of the city easily accessible from another. It also has a seamless transport system to boot. Abuja is divided into various sections which are all earmarked to serve specific purposes.

For example, the Central Business District (home to various offices and agencies) or Asokoro (where majority of experts and diplomatic staff are housed).



CLUB  
HOUSE



# DESIGN

The Hillview Villas is a benchmark for a luxury living. A 12unit architectural wonder of 2 (two) prototype designs with a clubhouse interior designs and luxurious finishes make it one of a kind.

## CLASSIC AND CAPTIVATING

The Hillview Villas offers one of the best comfort and luxurious home satisfaction carefully structured and crafted with the state of the art materials, very spacious, elegant and all en-suite rooms with large modern windows.

Every unit in this luxurious estate has been artfully designed to reflect a modern and high end space, situated in a premium location.

Waking up to beautiful panoramas with great atmospheric conditions, peaceful surroundings and enjoying glorious sunrise and sunset is one of the best feeling HillView Villas has to offer”.

*“A beautiful home changes everything”*



PROTOTYPE  
B



# FEATURES

Featuring a dynamic range of ideals and practices, that pushes the boundaries of traditional architectural philosophies, the idea of postmodernism first emerged in the 1950s as a means of exploring edificial space.

Nothing beats the heat than an exclusive refreshing clubhouse with a SPA Area, Wellness room, Swimming pool, movie room, Male and Female Salon, Children Playground and an Open restaurant to splash away your worries. Nothing brings in more peace than a living space.

## PROTOTYPE A

3 Floors  
total livable area- 357 square meters  
4 bedrooms  
3 Living rooms  
1 Laundry room

## PROTOTYPE B

3 floors  
total livable area- 450 square meters)  
5 bedrooms  
3 Living rooms

PROTOTYPE  
B

*“Owning a home is a keystone of wealth, both financial affluence and emotional security”*

**Suze Orman**





LIVING ROOM



# THE GURARA MOTIF



KITCHEN  
AREA

The interior style used is Gurara Motif, a signature interior scheme of Urban Abode Nigeria Limited.

The Gurara scheme comprises a perfect blend of white, grey, and silver, used in a fashion akin to the Scandinavian style of interior design.

*“The designer must be able to see-make a concentrated effort to absorb the essence of the project. Seeing is a very difficult thing to do.*

*Most people “look” at a lot of things but never “see” anything. Looking is emotional; seeing is an intellectual process.”*

Albert Hadly

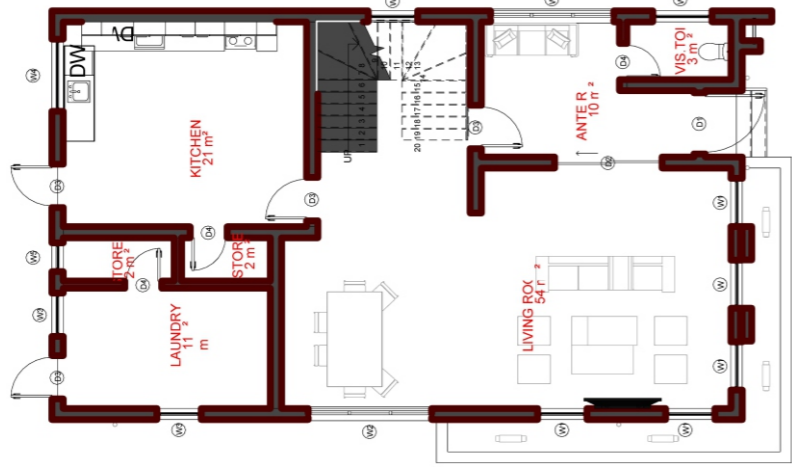


DINING  
AREA

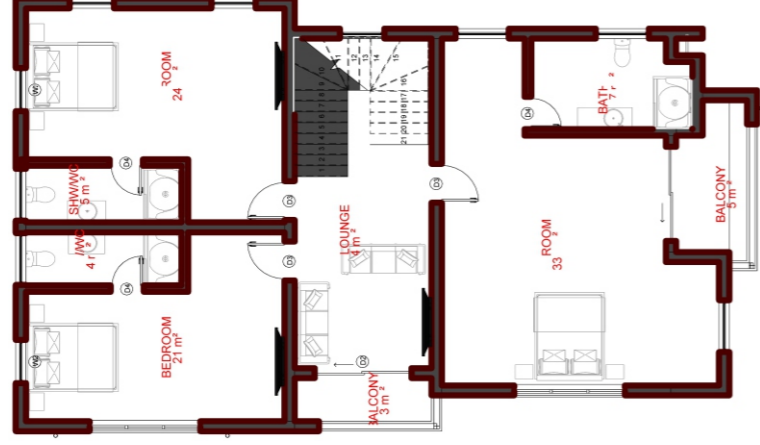


# FLOOR PLANS

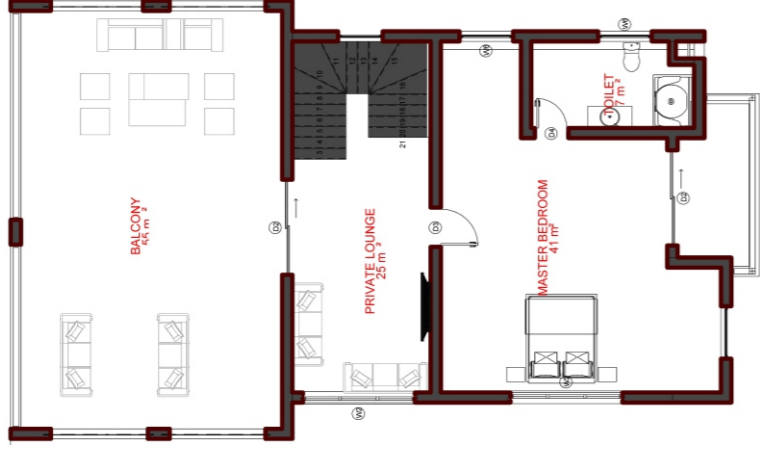
PROTOTYPE A



GROUND FLOOR

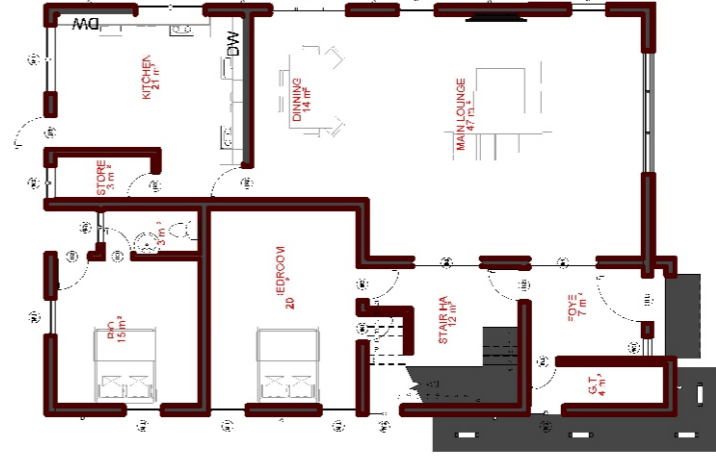


FIRST FLOOR

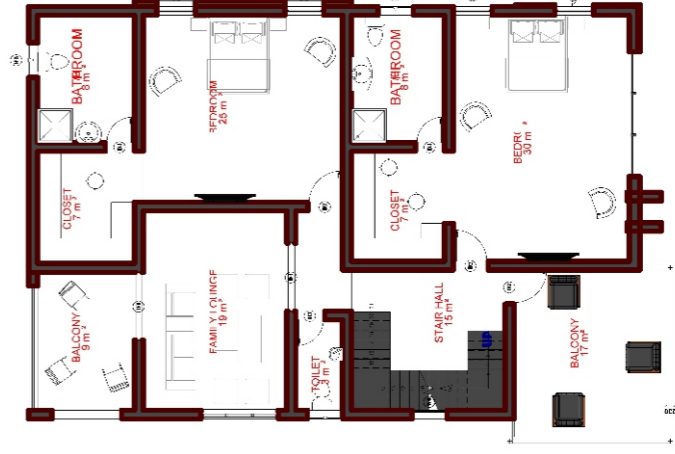


PENT FLOOR

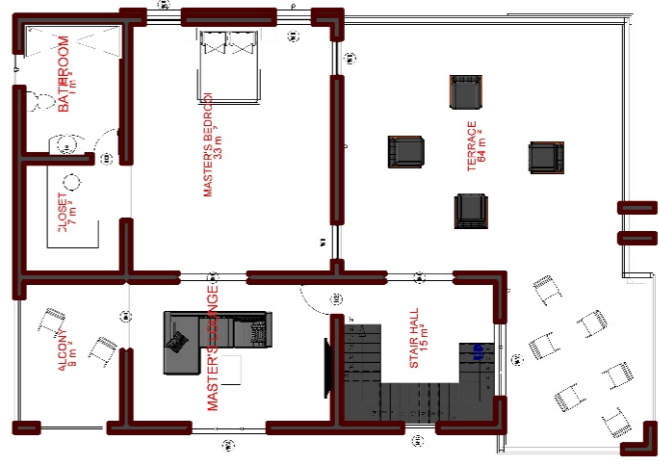
PROTOTYPE B



GROUND FLOOR

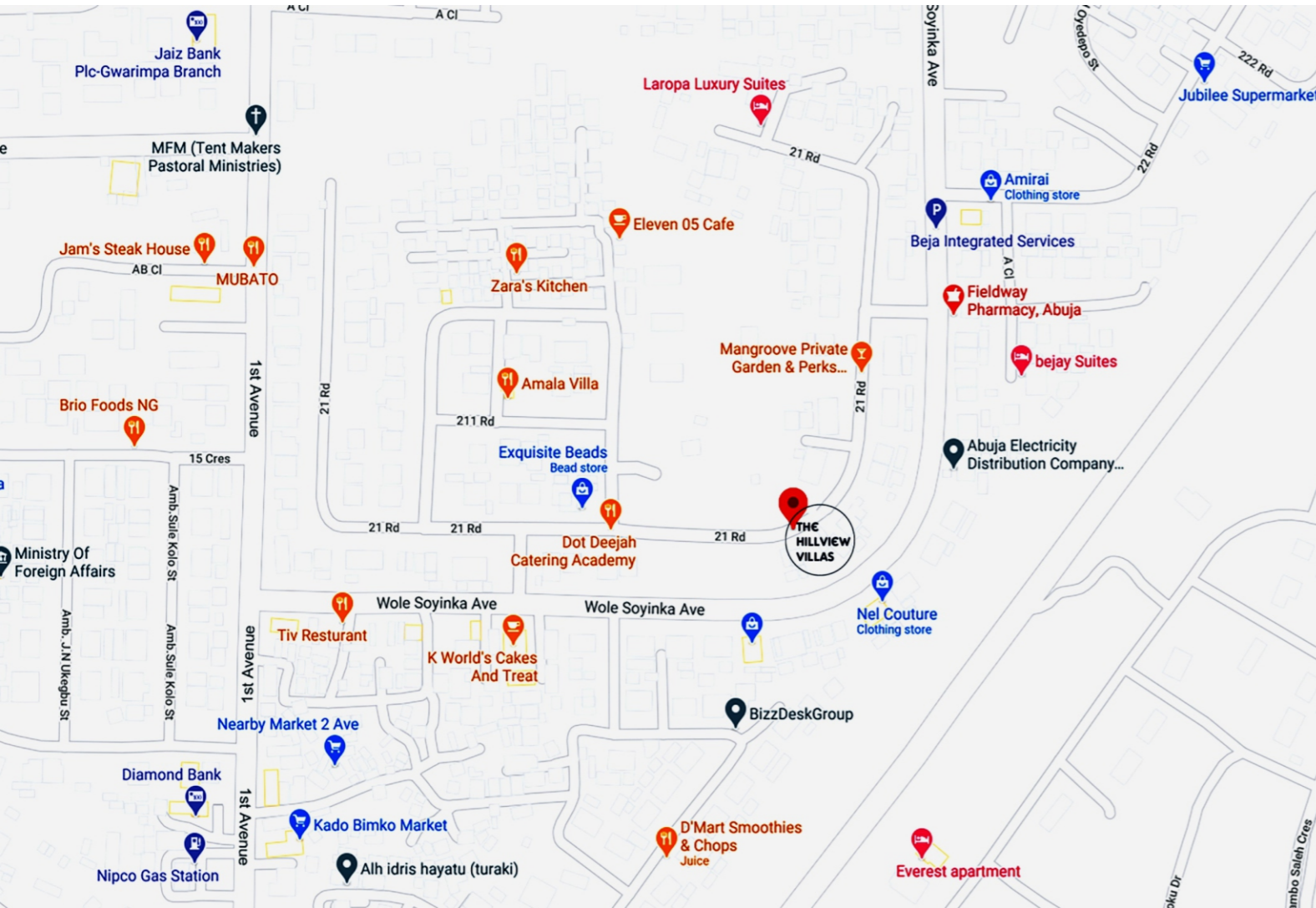


FIRST FLOOR



PENT FLOOR





ARIEL VIEW





PROTOTYPE  
A